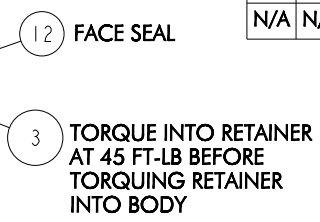
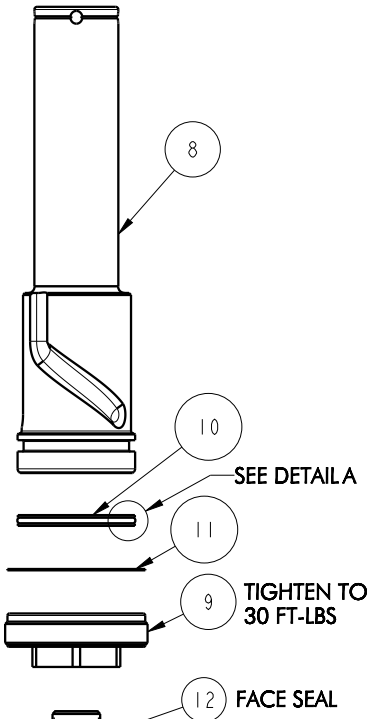


DETAIL A
SCALE 3.000



NO	QTY	PART NO	DESCRIPTION	STD SEAL KIT	FKM SEAL KIT
1	1	21500011	SCREW, CAP, BTNH, M16 X 25, ALY		
2	1	23600013	BALL STEEL, ALLOY, 312	X	X
3	1	29740200	SENSOR, ULTRASONIC, M12, 1m		
4	1	30601130	ASSY, PLUG, SOCH, SAE 3,303 SSSL		
5	1	39000038	O-RING, (-008)	X	39051021
6	1	39011060	SEAL, BEVEL W/HEEL INSERT, 1-1/4 x 1/8 x 1-1/2	X	39052015
7	1	39053005	WIPER, SNAP-IN, (1-1/4)	X	X
8	1	47510925	PLUNGER, SC, 5000/22 kN, US		
9	1	81400083	RETAINER, SC, HS, 5000, US		
10	1	39H11056	SEAL, T, (1 9/16 X 5/32 X 1 3/4)	X	39V11056
11	1	39T55004	GASKET, (-134)	X	X
12	1	43000040	SENSOR, FACE SEAL		43000041
N/A	N/A	60150277	KIT, SEAL (STANDARD)	NOTED	N/A
N/A	N/A	6V150218	KIT, SEAL (FKM)	N/A	NOTED

PARTS LIST	
	VEKTEK, INC. 1334 E. SIXTH AVE. P.O. BOX 625 EMPORIA, KS. 66801 U.S.A.
ASSEMBLIES AFFECTED 15-0218-00-X-US	PARTS LIST, ASSY, SC, VC, TB, 5000, DA, US
SIZE A	PL15132
	REV A

A	5531	RELEASE	ALS	11/5/24
REV	IN ACCORDANCE WITH ECN	EFFECTIVE DATE	REVISED BY	DATE
DRW BY:	ALS	DRAWING STATUS: Released		
DATE:	10/3/24	PRODUCTION APPROVED FOR RELEASED STATUS ONLY		